

Trumpet in B \flat

Sex and Death at Covent Garden

1. Intrada

Lento

$\text{♩} = 60$

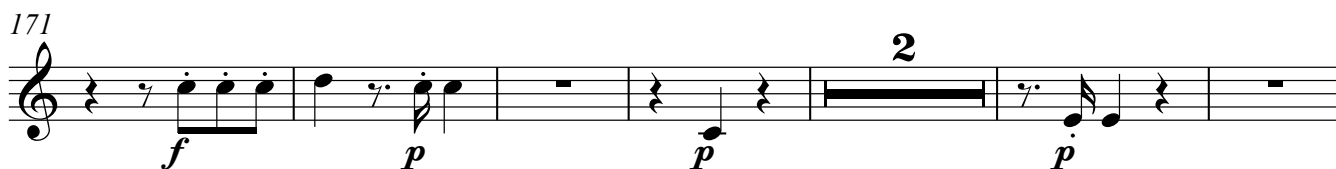
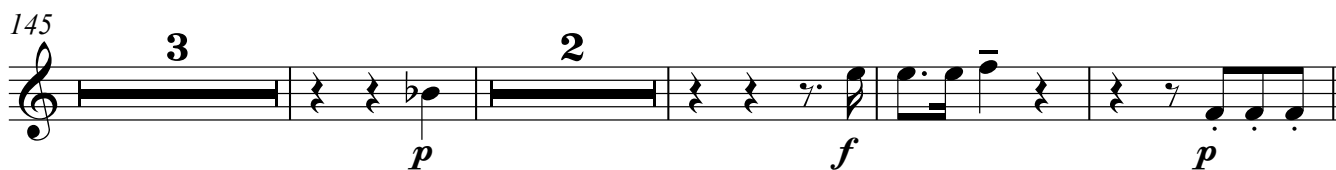
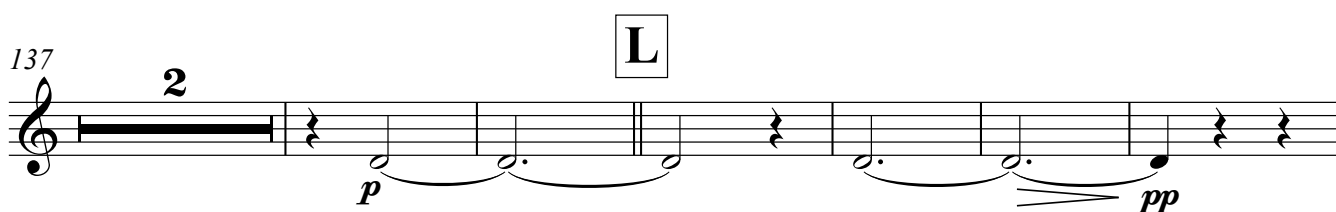
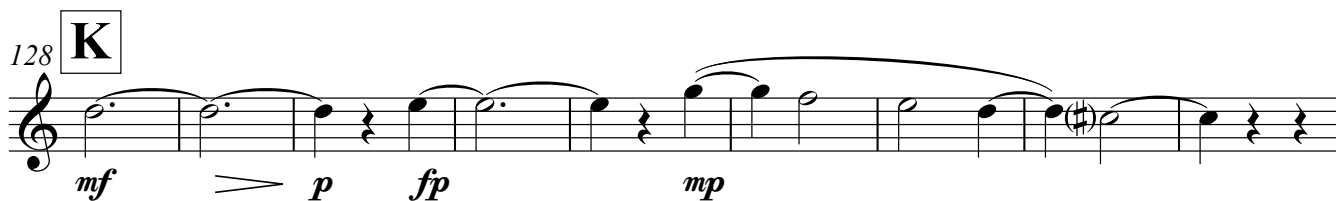
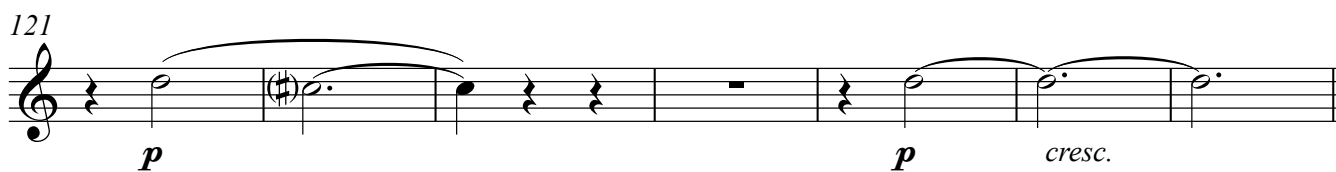
Charlie Barber

Musical score for the Intrada section, measures 1 to 51. The score is written for a single staff in 4/4 time. It consists of three measures of rests, each labeled with a measure count and a letter in a box: Measure 10 (A), Measure 8 (B), and Measure 8 (C). The tempo is Lento, with a quarter note equal to 60 beats. The score ends with a double bar line.

2. Recitative + Aria

$\text{♩} = 116$

Musical score for the Recitative + Aria section, measures 63 to 114. The score is written for a single staff in 3/4 time. It consists of several measures of rests, each labeled with a measure count and a letter in a box: Measure 13 (F), Measure 11 (G), Measure 8 (I), and Measure 4 (J). The tempo is marked as $\text{♩} = 116$. The score includes dynamic markings: *pp* (pianissimo) at measure 63, *p* (piano) at measure 91, *mf* (mezzo-forte) at measure 106, and *pp* (pianissimo) at measure 114. The score ends with a double bar line.

Trumpet in B \flat 

Trumpet in B \flat

185

f *mp* *p* 2

193 **P**

p *cresc.* *mf* *p* *f*

198

mf *p* 3

206 **Q**

p 3

213

f *f*

219 **R**

f *p* 2

226

cresc. *f*

229

Attacca

Charlie Barber - Sex & Death at Covent Garden

Trumpet in B \flat

3. Allegro

 $\text{♩} = 132$

233 **S** **T** **U** Oboe 1

32 24

291 *mf* 4

299 *mf* *f*

305 **V** 4 7 *p* *cresc.* *f* *mf*

320 *p* *mf* *f*

325 **W** 3 22

351 **X** **Y** 22 22

Trumpet in B \flat

395 **Z** 32 **AA** 7 Oboe 1

438 *mf*

447 **BB** 2 3 *f* *mf*

457 3 *mf*

464 **CC** 15

482 **DD** 11 *f*

498

503

Detailed description of the musical score: The score is for a Trumpet in B-flat part. It begins at measure 395 with a rest for 32 measures, marked with a box 'Z'. This is followed by a rest for 7 measures, marked with a box 'AA'. The music then continues with a series of notes and rests, including a dynamic marking of *mf*. At measure 438, the music continues with a series of notes and rests, including a dynamic marking of *mf*. At measure 447, there is a rest for 2 measures, followed by a rest for 3 measures, marked with a box 'BB'. The music then continues with a series of notes and rests, including a dynamic marking of *f* and *mf*. At measure 457, there is a rest for 3 measures, marked with a box 'CC'. The music then continues with a series of notes and rests, including a dynamic marking of *mf*. At measure 464, there is a rest for 15 measures, marked with a box 'DD'. The music then continues with a series of notes and rests, including a dynamic marking of *f*. At measure 482, the music continues with a series of notes and rests. At measure 498, the music continues with a series of notes and rests. At measure 503, the music continues with a series of notes and rests, ending with a double bar line.

4. Cadenza

Adagio

 $\text{♩} = 60$

509 **EE** Oboe 1

9

521

526

530

534 Rall.

dim. *mp* *p* *pp* *a niente*